

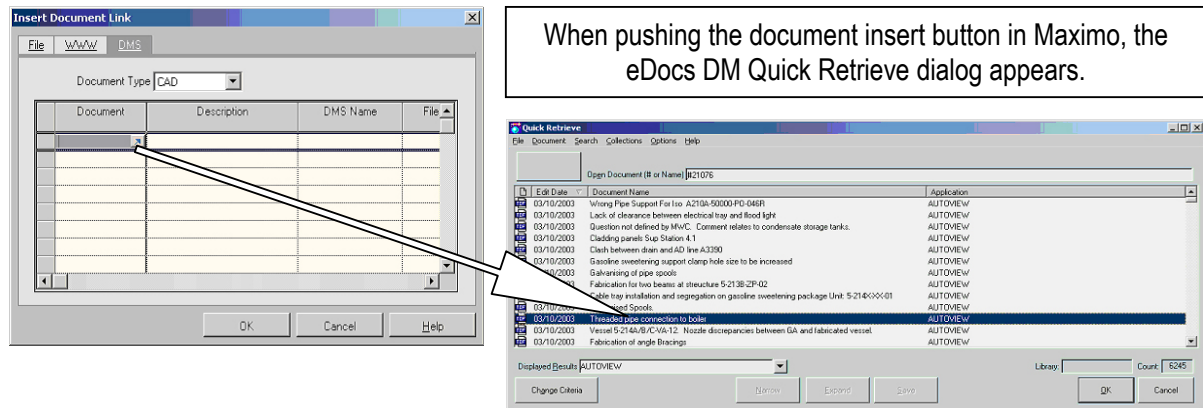
Maximo Integration for Livelink ECM - eDOCS DM

Enterprise Document Management for your Asset Management Business Processes

The complexity of today's business environment and highly competitive market requires enterprises to manage all their corporate assets with maximum efficiency.

The integration module for Maximo and Livelink ECM - eDOCS DM (formerly Hummingbird DM5) increases the effectiveness and return on investment from both systems. Livelink eDocs DM is an ideal solution for reliable storage and maintained consistency of the documents associated with the assets managed by Maximo (equipment, contracts, proposals, orders, locations, etc.) in a single centralized repository with links to the assets themselves.

The integration module supports managing references to documents in the DM repository from Maximo. This includes document extraction and printing, drag & drop from DM into Maximo, and the use of multiple versions of documents. Users will have immediate access from both Maximo and the DM repository.



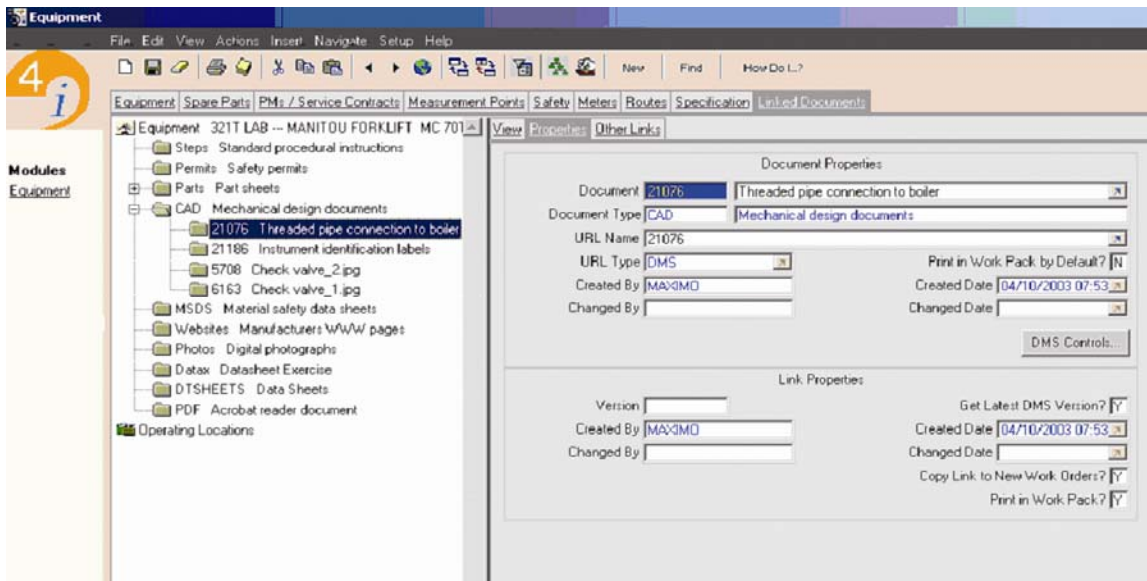
The integration allows you to quickly leverage your investment in eDocs DM and Maximo by relating safety certificates, project plans, contracts, engineering changes and other documents stored in the DM repository with assets in Maximo, integrating your managed documents into your critical MRO processes.

Key Features

- Easily locate and link DM documents to Maximo objects (Locations, Equipment, Contracts, Tenders, Requisitions, etc.) from within DM and Maximo:
 - From Maximo: A user viewing an asset/object can see all related documents in DM and can add links to additional documents using the DM Quick Retrieve dialog.
 - From DM: Administrators can create links between a Maximo object type and a field on the DM profile. When Maximo objects of that type are added, they automatically appear in the pick list for the associated DM profile field. Users saving documents into DM are then able to relate the document to the Maximo object by changing the DM profile field.

For example, an Administrator could create a link between Equipment objects in Maximo and a DM profile field called "Equipment." Equipment subsequently added to Maximo will automatically appear in the Equipment profile field in DM. When saving a document into DM, modifying the "Equipment" DM profile field will automatically associate the document to the specified Maximo object.

- User-friendly intuitive interface for effective use of all features of eDocs DM from within Maximo.
- Security: DM documents automatically inherit their security rights from the Maximo object to which they are linked.
- Automatic creation of DM folders and documents when a new object is created in Maximo. For example, if a new Requisition is created in Maximo then a folder for the requisition is created in DM and populated with related contract templates copied from a master template.
- Portability: Large volumes of documents can be easily transferred from one system to another allowing easy relocation of all project-related documentation on project completion.
- Ability to see document properties from within Maximo.



- Audit and Compliance: eDocs DM integrated with Maximo can help ensure that your organization meets regulatory requirements.

Get the maximum return from your investments in Enterprise Asset Management and Enterprise Document Management by integrating your systems with TerraLink's Integration Module for Maximo and Livelink ECM - eDocs DM.

For more information or to arrange a web demonstration contact TerraLink
 Phone: 646-201-5250 x101
 Email: sales@terralink-global.com